

Carrier 30 XW 552

Specifications

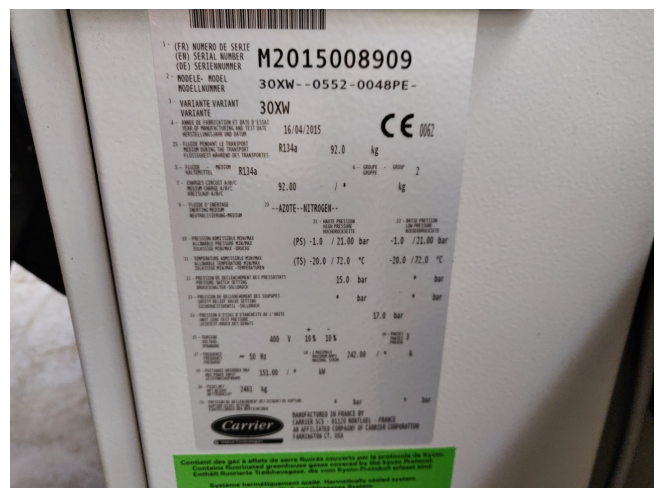
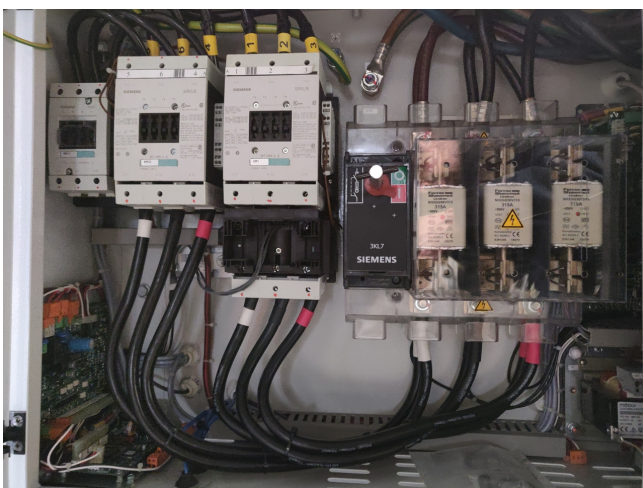
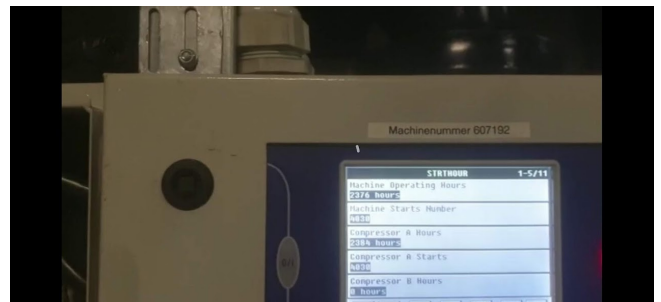
Brand	Carrier
Type	30 XW 552
Product type	Water Cooled Chiller
Capacité kW	535
Capacity Tons	152,12
Réfrigérant	Freon
Refrigerant Type	R 134 A
Weight	2461
Sizes	2742x936x1693 mm (LxWxH)
Remarks	Y.O.B. 16/04/2015 // AquaForce display
Remarks	ONLY 2376 running hours!
Stock	1



Description

Used Carrier 30 XW 552

Compressor: Carlyle 06T UW554ST1D screw compressor Refrigerant: R 134 A Tons: 152,12 Brand: Carrier Model: 30XW-0552-0048PE with AquaForce display **All components of this used chiller will be tested on good working, leak free condition (compressor, control panel, etcetera). Choosing HOSBV means buying with warranty. We perform a industrial cleaning and rust spots will be covered. Also, we can arrange your shipment.





TECHNICAL DATA 30XW

TECHNICAL DATA 30XW / 30XWH

Standard range	452	552	602	652	702	
Nominal cooling capacity*	kW	476	535	548	658	721
Energy efficiency ratio (EER)	kW/kW	5.6	5.6	5.5	5.6	5.6
EUROVENT class, cooling		A	A	A	A	A
European Seasonal Energy Efficiency Ratio (ESEER)		6.6	6.4	6.7	6.4	6.3
Heating capacity*	kW	506	580	616	-	-
Coefficient of performance (COP)	kW/kW	4.6	4.7	4.8	-	-
EUROVENT class, heating		A	A	A	A	A
Refrigerant	←					
Nb refrigerant circuit/Compressor		1/1	1/1	1/1	1/1	1/1
Length	mm	2742	2742	2742	3048	3048
Width	mm	936	936	936	1038	1038
Height	mm	1693	1693	1693	1900	1900
Operating weight	kg	2810	2850	2890	-	-
Sound power level Lw	db(A)	99	99	99	-	-

TECHNICAL DATA 30XWP / 30XWHP

Premium range	512	562	
Nominal cooling capacity*	kW	509	562
Energy efficiency ratio (EER)	kW/kW	5.9	6.0
EUROVENT class, cooling		A	A
European Seasonal Energy Efficiency Ratio (ESEER)		6.7	6.7
Heating capacity*	kW	554	661
Coefficient of performance (COP)	kW/kW	4.8	5.2
EUROVENT class, heating		A	A
Refrigerant	←		
Nb refrigerant circuit/Compressor		1/1	1/1
Length	mm	3059	3059
Width	mm	936	936
Height	mm	1743	1743
Operating weight	kg	3180	3220
Sound power level Lw	db(A)	99	99

30XWH and 30XWHP are versions of Aquaforce chillers dedicated to heating applications.

*Eurovent conditions :
 Cooling mode : Evaporator inlet/outlet temperatures = 12/7°C, Condenser inlet/outlet temperatures = 30/35°C
 Heating mode : Condenser inlet/outlet temperatures = 40/45°C, Evaporator inlet/outlet temperatures = 10°C with
 Evaporator & condenser coefficient = 0,000018 m³/K/W

Available 2009 / Preliminary data